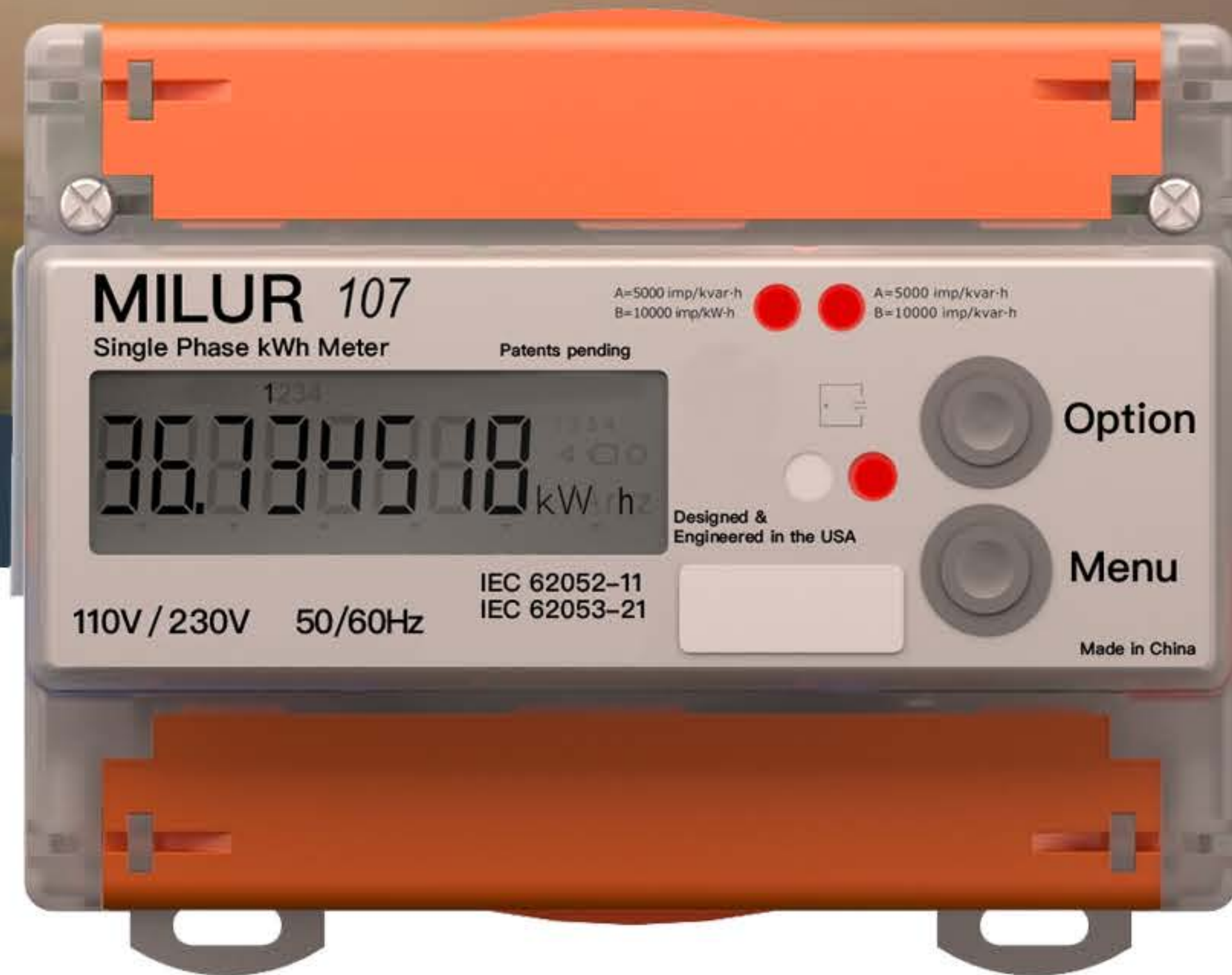




MILANDR



Smart Meter Series

MILUR® 107

Configurations

- 80A - 110/230 V - 50/60Hz

High-Performance & Reliability

- ARM Microprocessor with 32-bit RISC-core ARM Cortex-M0

Accurate

- IEC 62053-21 Accuracy Class
 - 1.0
 - 2

Billing Flexibility

- Supports up to 4 tariffs

Wide Operating Temperature Range

- Operating range of -40 to 158° F

Tamper-Proof

- Tamper sensor and log

Built-in Overload Protection

Data Storage

Large LCD shows kWh

DIN Rail mounting

Metering & Submetering Applications

- Residential Buildings
- RV Parks
- Retail & Shopping Malls
- Industrial Submetering
- Tenant Cost Allocation
- Measurement & Verification
- Energy & Cost Reduction
- Green Building Initiatives
- Regulatory Compliance

Milur® 107 Single Phase Smart Meter

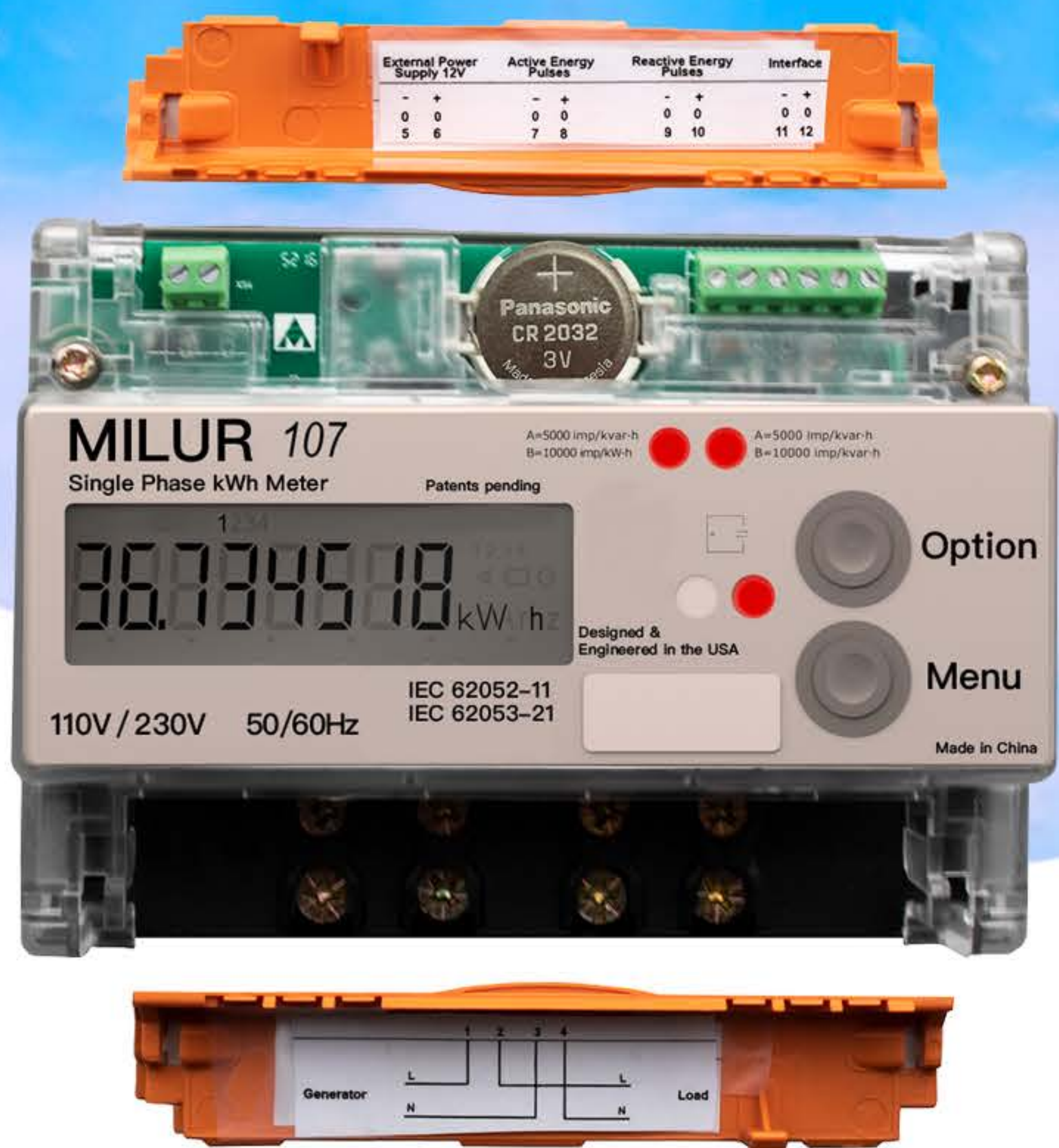
Leveraging over 25 years in the design of high-performance chipsets and ARM microprocessor technology, Milandr's **Milur® 107 Single Phase Smart Meter** is a high-precision electricity meter for intelligent energy metering and submetering in managed buildings, apartments, houses, RV parks, or other commercial operations. This single-phase meter can be programmed with up to four tariffs.

The Milur® 107 is a true intelligent meter, able to store data in non-volatile memory and measure active/reactive energy in both consumed and net metering environments.

The Milur® 107 is configured with a RS-485 serial communications interface. Although it can run independently, the RS-485 interface allows it to be integrated into a Supervisory Control and Data Acquisition System (SCADA) for industrial-grade metering.

Equipped with an ARM Microprocessor, it has an error-free runtime average of 25 years. It is direct pass-through, and does not require current transformers.

Our versatile Milur® Configurator software (available only for PC at this time) allows access to additional meter functionality and customization. The configurator facilitates the setting of time, date, and password, as well as the customization of tariff schedules, seasonal tariff changes, voltage level alarms, and much more. The Milur® Configurator software is easy to use and takes only minutes to set up, no installation needed.



MILUR® 107

Additional Features

- ✓ Accuracy Maintained for 16 Years
- ✓ Overload Protection
- ✓ Direct Pass-Through (Current Transformers not required)
- ✓ 3 Year Warranty
- ✓ Covered Terminal Interface
- ✓ Non-Resettable LCD Display
- ✓ IP67 Rated

Technical Specifications

Voltage Rating	110V - 230 V
Current Rating	80 A
Number of Tariffs	Up to 4
Meter Accuracy	1.0 2
Current Type	AC
Operating Frequency	50/60 Hz
Number of Phases	1
Interface	RS485
Display Type	LCD
Available Data	kWh reverse kWh Active/Reactive Energy Voltage Current Active/reactive power Frequency Power Factor Current Rate Battery Voltage

4.92"

2.68"



www.milandr.com

1745 Shea Center Dr Suite 400,
Highlands Ranch, CO 80129

Sales@milandr.com

(720)-344-4887